

Grant Entity Data (GED) Process Country Coordinating Mechanisms (CCMs)¹

Click here to get started

TheGlobalFund Partner Portal



COUNTRY COORDINATING MECHANISMS own this stage of the GED process

SUBMIT

The **GLOBAL FUND** completes these stages of the GED process

REVIEW²

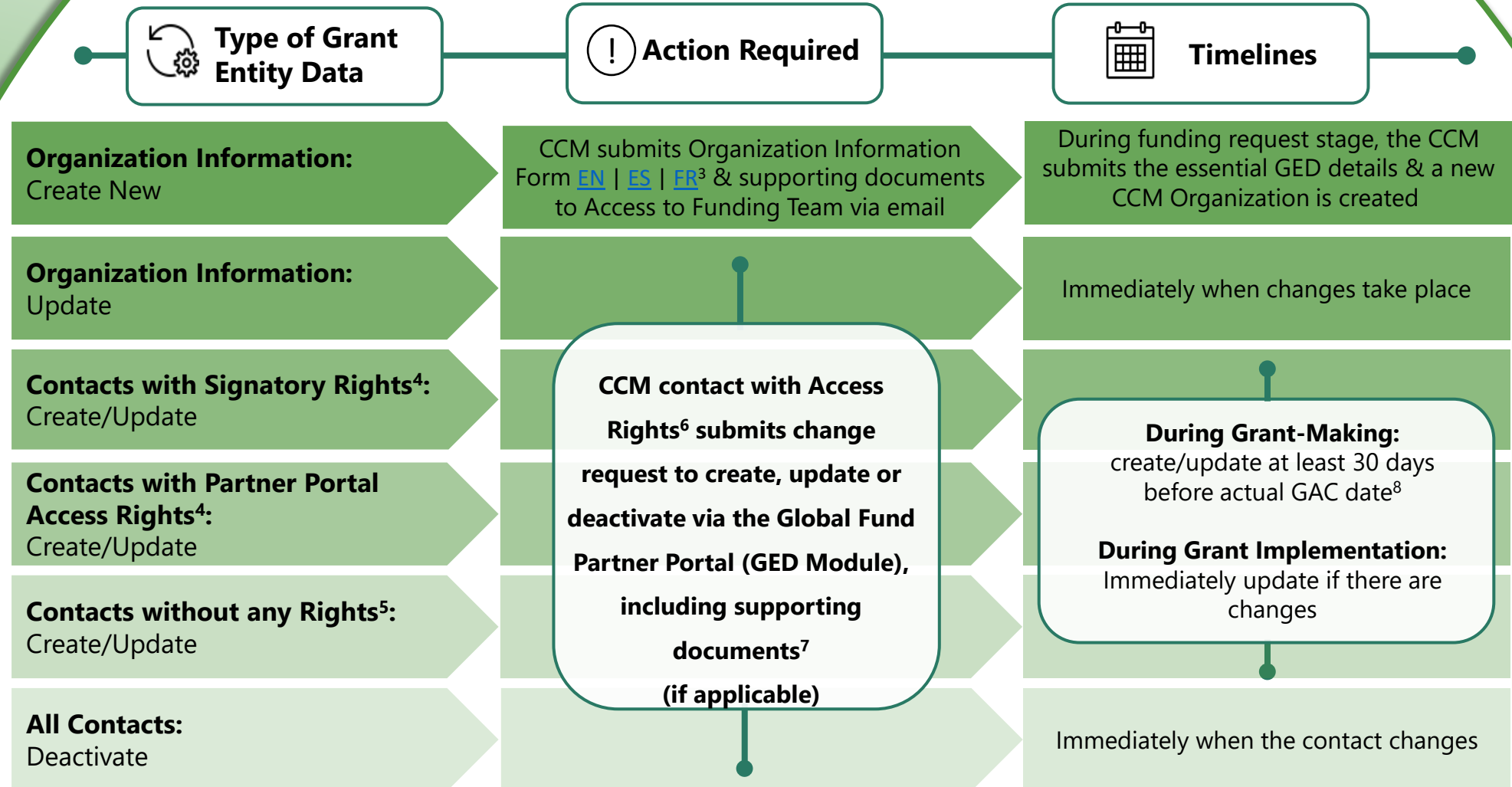
VALIDATE

The updated GED is reflected in the Global Fund Partner Portal (GED Module)

Click here for GED-related resources & materials



WHAT DO CCMs NEED TO DO?



¹ Inclusive of any Regional Coordinating Mechanism (RCM), Regional Organization (RO) or other applicants as applicable

² Note that during the review stage the Global Fund might reject a "change request". The "change request" must then be resubmitted for another full review.

³ Spanish and French versions are courtesy translations only. External stakeholders should complete and submit the English version of this template.

⁴ Information on Signatory Rights, Notice Rights and Partner Portal Access Rights are detailed in the [Operational Policy Note \(OPN\) on Grant Entity Data](#).

⁵ Includes contacts whose rights have been reduced (e.g. removing access rights, signatory rights and or notice rights from contacts)

⁶ The initial CCM contact with Access Rights is created by the Global Fund upon receipt of the Organization Information Form during the creation of a new organization.

⁷ See [OPN Annex 3](#) on required supporting documents

⁸ For more information about a grant's respective GAC dates, please contact your Country Team.